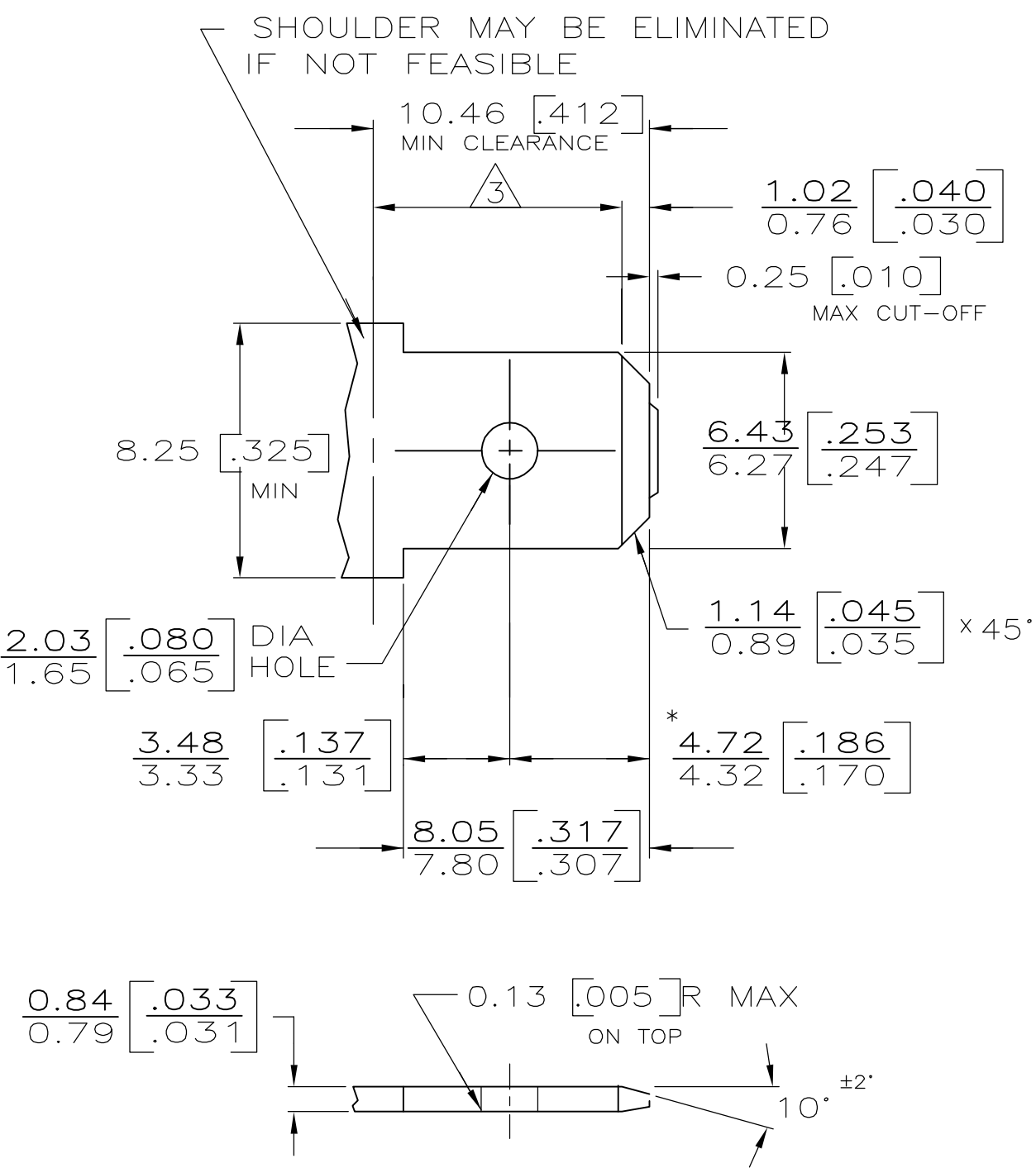


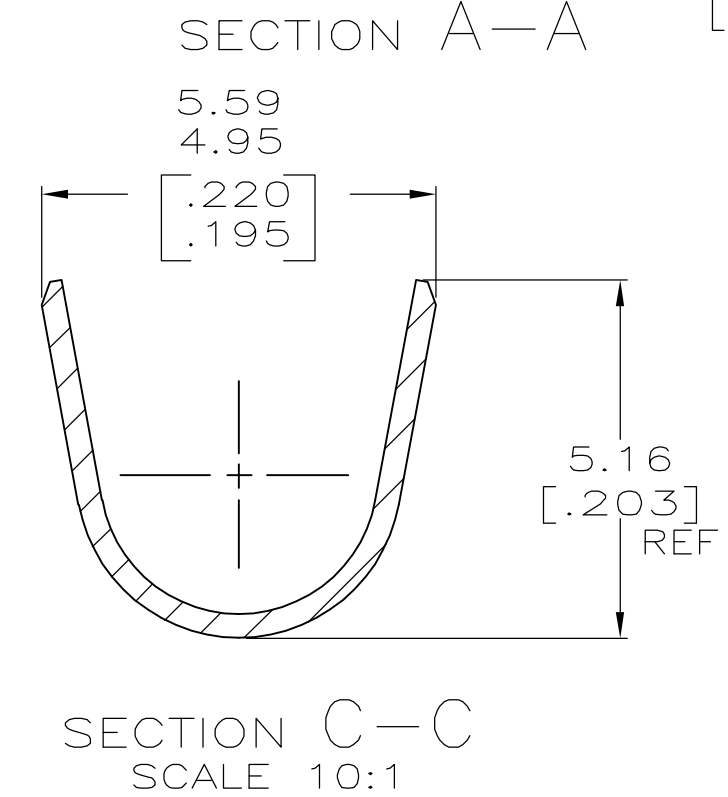
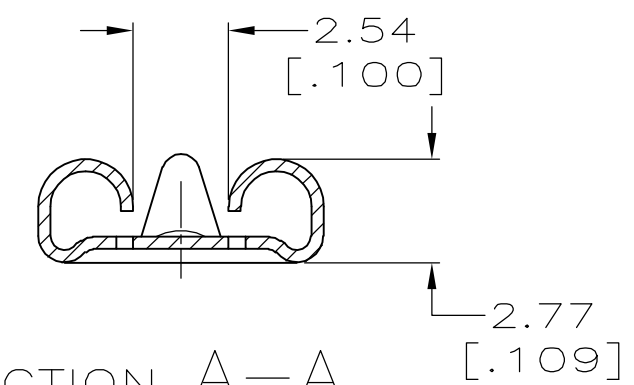
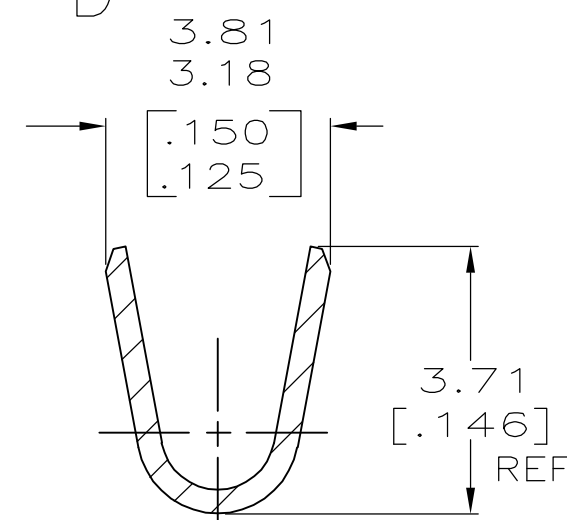
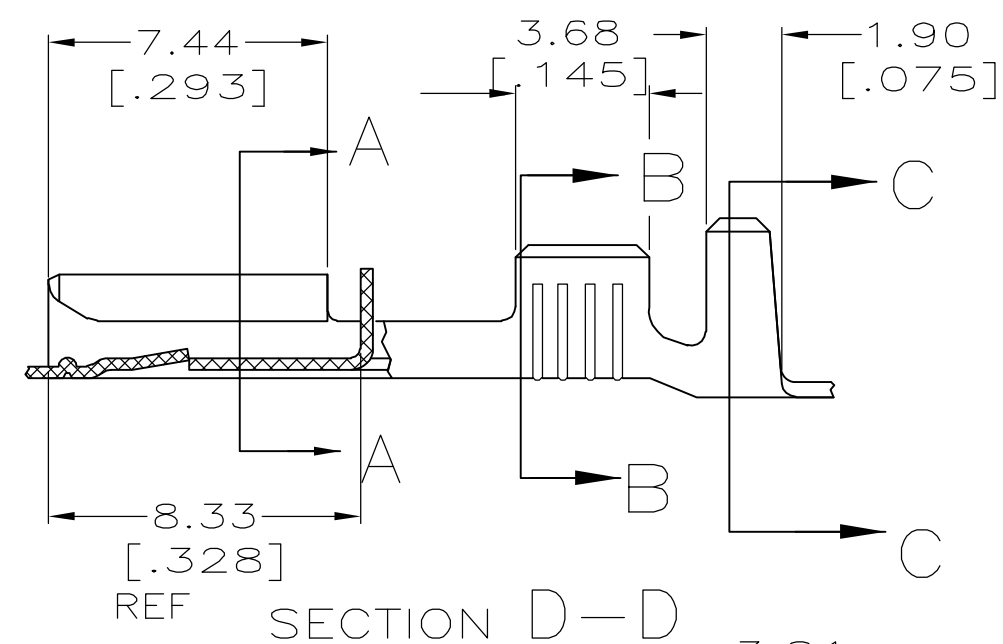
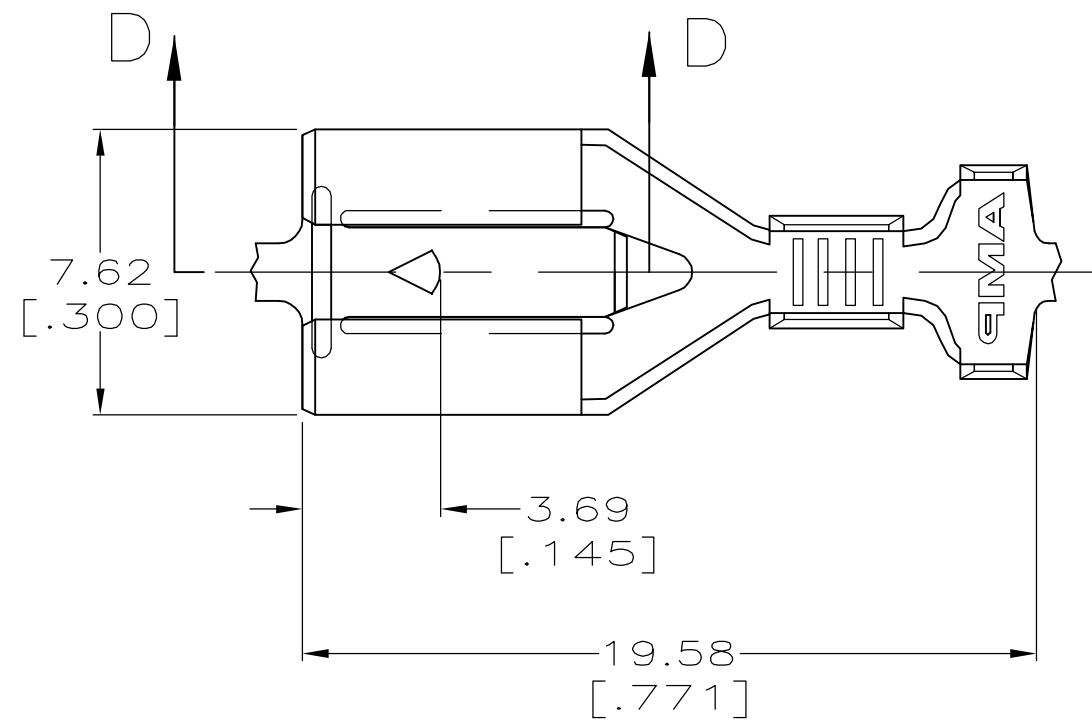
THIS DRAWING IS UNPUBLISHED. RELEASED FOR PUBLICATION
 © COPYRIGHT BY TYCO ELECTRONICS CORPORATION. ALL RIGHTS RESERVED.

LOC		DIST		REVISIONS			
P	LTR	DESCRIPTION		DATE	DWN	APVD	
AF	50	C1	REV PER ECR 05-015812	15FEB06	JR	RL	

SUGGESTED MATING TAB



- 1 - MATL: 1/2H BRASS OR NICKEL PL STEEL.
 - 2 - NO BURRS PERMISSIBLE AT HOLE.
 - 3 - MUST BE FLAT WITHIN 0.076 [.003] OVER THIS LENGTH.
 - 4 - TIN PLATING IS REQUIRED ON BRASS WHEN TERMINAL TEMP. IS OVER 225°F.
 - 5 - HOLE MUST BE SYMMETRICAL ABOUT TAB Q WITHIN 0.076 [.003]
- * TO BE USED ONLY WHEN SHOULDER IS ELIMINATED.



- 1 CONTINUOUS STRIP ON REELS.
- 2 REF CRIMP INFORMATION:
WIRE CRIMP: .110 F TYPE
INSULATION CRIMP .180, F TYPE
- 3 #18-#14 AWG, 2,29-3.94 [.090-.155] DIA
OR TWO #18'S WITH 1.90 [.075] MAX INSULATION

TIN 0.002032 [.000080] MIN	1217094-2
-	1217094-1
FINISH	PART NO

THIS DRAWING IS A CONTROLLED DOCUMENT.		DWN	JR RUTH	6/19/98	Tyco Electronics Corporation Harrisburg, PA 17105-3608
DIMENSIONS: INCHES		CHK	MS FEHER	6/19/98	
TOLERANCES UNLESS OTHERWISE SPECIFIED:		APVD	J GILLISPIE	6/19/98	
0 PLC ± - 1 PLC ± - 2 PLC ± 0.25 [.010] 3 PLC ± - 4 PLC ± - ANGLES ± -		PRODUCT SPEC	-	-	
MATERIAL	H06 BRASS	FINISH	SEE TABLE	APPLICATION SPEC	114-2074
WEIGHT		-		SIZE	A2
CUSTOMER DRAWING		SCALE		CAGE CODE	00779
SCALE		5:1		DRAWING NO	C=1217094
SHEET		1 of 1		RESTRICTED TO	-
REV		C1			